



# Ascent™ Max

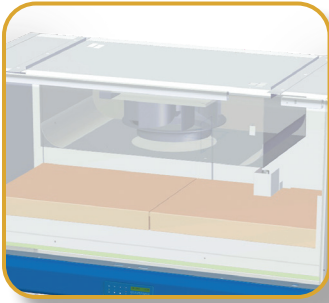
## Containment Ventilated Enclosure

- *The Safe, Energy-Efficient, and Easy to Clean PEC*
- *For USP 800 Hazardous Non-Sterile Compounding*



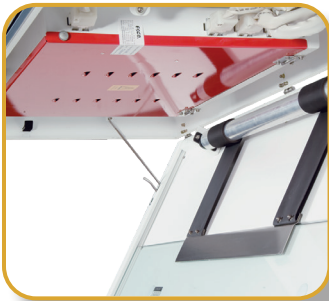
# Esco Ascent™ Max Containment Ventilated Enclosure

*Provides Operator and Environment Protection*



## Centrifugal Fan

- *Permanently lubricated fans are energy efficient with external rotor motor design that reduces operating costs*
- *Extremely low noise and low vibration level*



## Robust Hood Construction

- *Key components including LED lamps, motor capacitor, electrical harness, electronic ballast, and switch control are mounted outside the airstream and away from contaminated areas to permit easy service*



## HEPA Filter

- *Diffusion technology to ensure even filter loading*
- *Efficient perimeter clamping ensures no leakage as well as allows easy filter change procedure*



## Rear Walls

- *Electro galvanized steel wall for superior durability*



## Work Top

- *Phenolic resin worktop*
- *Easy to clean, corrosion and chemical resistant makes it an ideal worktop for experiments*



*Ascent™ Max Containment Ventilated Enclosure, Model ADC-4F2 (Shown with STA)*



### Sentinel™ Silver Microprocessor Control, Alarm System

- Advanced microprocessor control supervises operation of all hood functions. Temperature-compensated air velocity sensor monitors airflow. 24-hour clock and blower run hour meter are standard.

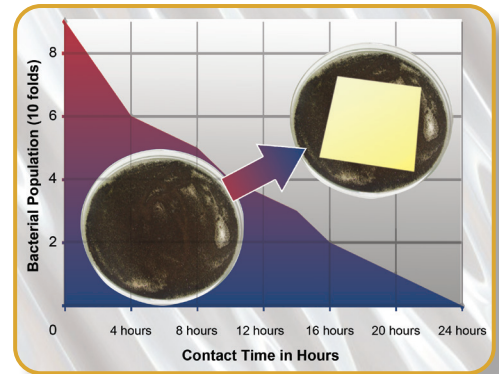
### Hinged Polycarbonate Sash

- Allows easy access and easy cleaning



### ISOCIDE™ Powder Coat

- Silver-ion impregnated powder coat
- Inhibit microbial growth to improve safety



### Support Stand

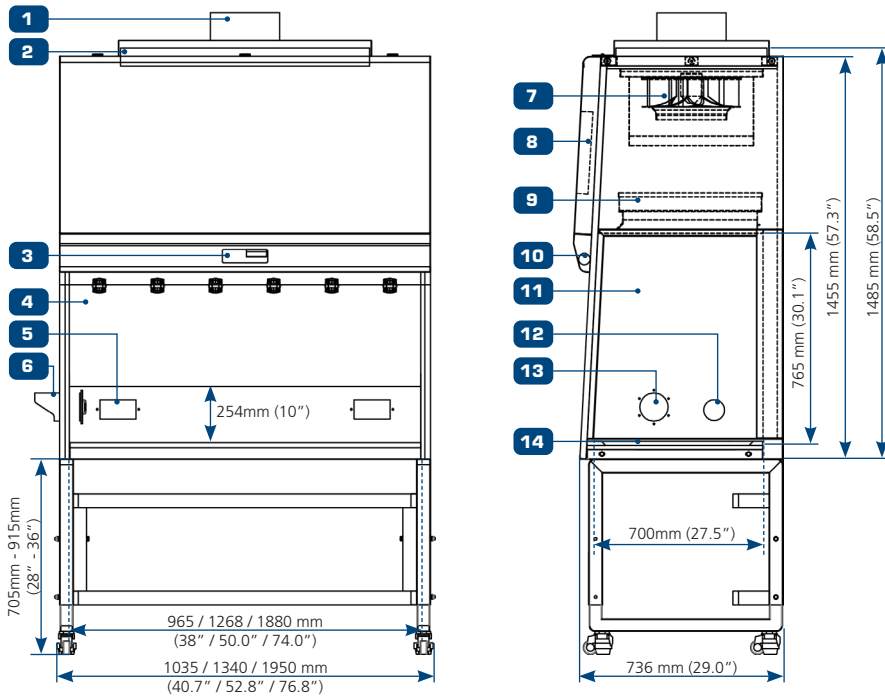
- Made from durable material to support a maximum weight of 500-600 Kg (1102 - 1322 lbs)



	Filtration	Electrical Safety
Standards Compliance	IEST-RP-CC001.3, USA IEST-RP-CC007, USA IEST-RP-CC034.1, USA	UL-61010-1, USA/Canada CAN/CSA-22.2, No.61010-1 EN-61010-1, Europe IEC61010-1, Worldwide

General Specifications, Ascent™ Max Containment Ventilated Enclosure			
Model	ADC-3F2	ADC-4F2	ADC-6F2
External Dimensions (W x D x H)	1035 x 736 x 1485 mm (40.7" x 29.0" x 58.5")	1340 x 736 x 1485 mm (52.8" x 29.0" x 58.5")	1950 x 736 x 1485 mm (76.8" x 29.0" x 58.5")
Internal Work Area (W x D x H)	965 x 596 x 765 mm (38.0" x 23.5" x 30.1")	1268 x 596 x 765 mm (50.0" x 23.5" x 30.1")	1880 x 596 x 765 mm (74.0" x 23.5" x 30.1")
Filtration System	Primary Filter	HEPA filter, typical efficiency of >99.99% at 0.3 microns, removes particulates and aerosols	
	Secondary Filter	HEPA filter, typical efficiency of >99.99% at 0.3 microns, removes particulates and aerosols	
Exhaust Ducting	Optional Exhaust Collar with 10" diameter. Not included as standard item		
Inflow Air Velocity	Initial Setpoint : 0.4 m/s or 80 fpm		
Air Volume	567 m³/h (334 cfm)		
Sound Emission	62 dBA		
LED Light Intensity at Zero Ambient	>800 Lux (>74 foot-candles)		
Hood Construction	Main Body	1.2 mm (0.05") 18 gauge electro-galvanized steel with white oven-baked epoxy-polyester Isocide™ antimicrobial powder coated finish	
	Side Walls	Polycarbonate	
	Work Top	Phenolic resin	

## Engineering Drawing



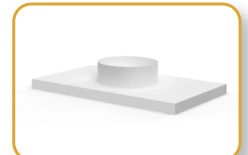
1. OPTIONAL exhaust collar with 10" diameter
2. Secondary HEPA filter
3. Esco Sentinel™ Silver Microprocessor
4. Hinged window
5. Electrical Outlet
6. Interchangeable stainless steel waste bag port
7. Blower

8. Electrical/ Electronics panel
9. Primary HEPA filter
10. LED lamp
11. Polycarbonate sides
12. Cable port
13. 4" Diameter waste chute
14. Phenolic resin worktop

## Common Accessories



Ergonomic Lab Chair



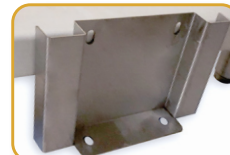
Exhaust Collar



IQ OQ



Foot Rest



Seismic Bracket



STA Support Stand

**ESCO**  
LIFESCIENCES GROUP

Esco Technologies, Inc  
903 Sheehy Drive, Suite F, Horsham, PA 19044, USA  
Tel: +1 215-441-9661 • Email: eti.admin@escolifesciences.com  
Web: www.escolifesciences.com